

**Hayward Hydroelectric Project  
FERC Project No. 2417**

**Exhibit G  
Project Boundary Map**

**Final License Application**

**Prepared for**

Northern States Power Company  
a Wisconsin Corporation

**Prepared by**

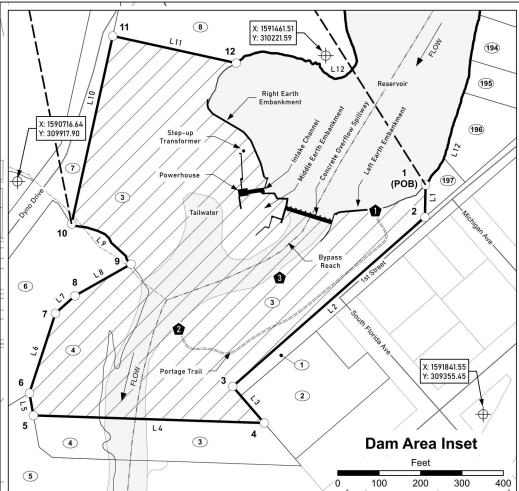
**Mead  
& Hunt**

meadhunt.com

**November 2023**

## **TABLE OF CONTENTS**

- 1. Hayward Hydroelectric Project – Project Boundary Map**
- 2. Hayward Hydroelectric Project – Parcel Ownership, Recreation Site, and Project Boundary Course Tables**



**LICENSEE STATEMENT**

I have reviewed the Hayward Hydroelectric Project boundary shown herein. The licensee either owns in fee simple or has the rights necessary or appropriate for the operation of the hydroelectric project. The project boundary lines that are not contour lines were based on GIS parcel information provided by the Wisconsin Statewide Parcel Database and Public Land Survey System (PLSS) information provided by the Wisconsin Department of Natural Resources GIS Open Data Portal and the Wisconsin State Cartographer's Office.

**Matthew J. Miller** Digitally signed by Matthew J. Miller  
Date: 2023.06.09 15:09:25 -05'00'

**SURVEYOR'S STATEMENT**

I HEREBY STATE THE PROJECT BOUNDARY DELINEATION FOR THE HAYWARD HYDROELECTRIC PROJECT AS SHOWN ON THIS EXHIBIT "G" MAP IS DEVELOPED WITHIN REASONABLE MAPPING ACCURACIES AS REQUIRED BY 18CFR44.1. THE DOCUMENTED HAYWARD PROJECT BOUNDARY LINE WAS ADJUSTED OR ROTATED TO BEST FIT WITH GEOSPATIAL DATA OBTAINED FROM WISCONSIN ONLINE DATA SOURCES AND WAS NOT FIELD SURVEYED.

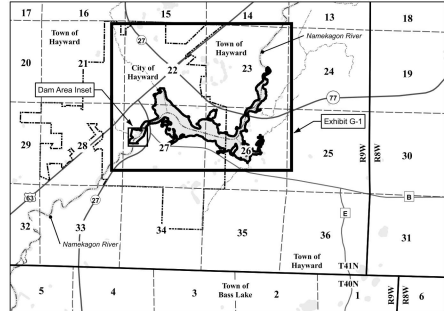
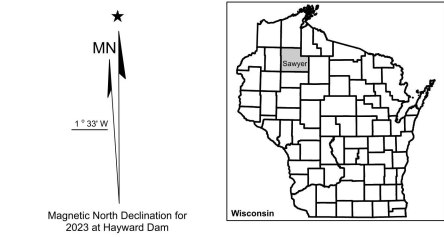
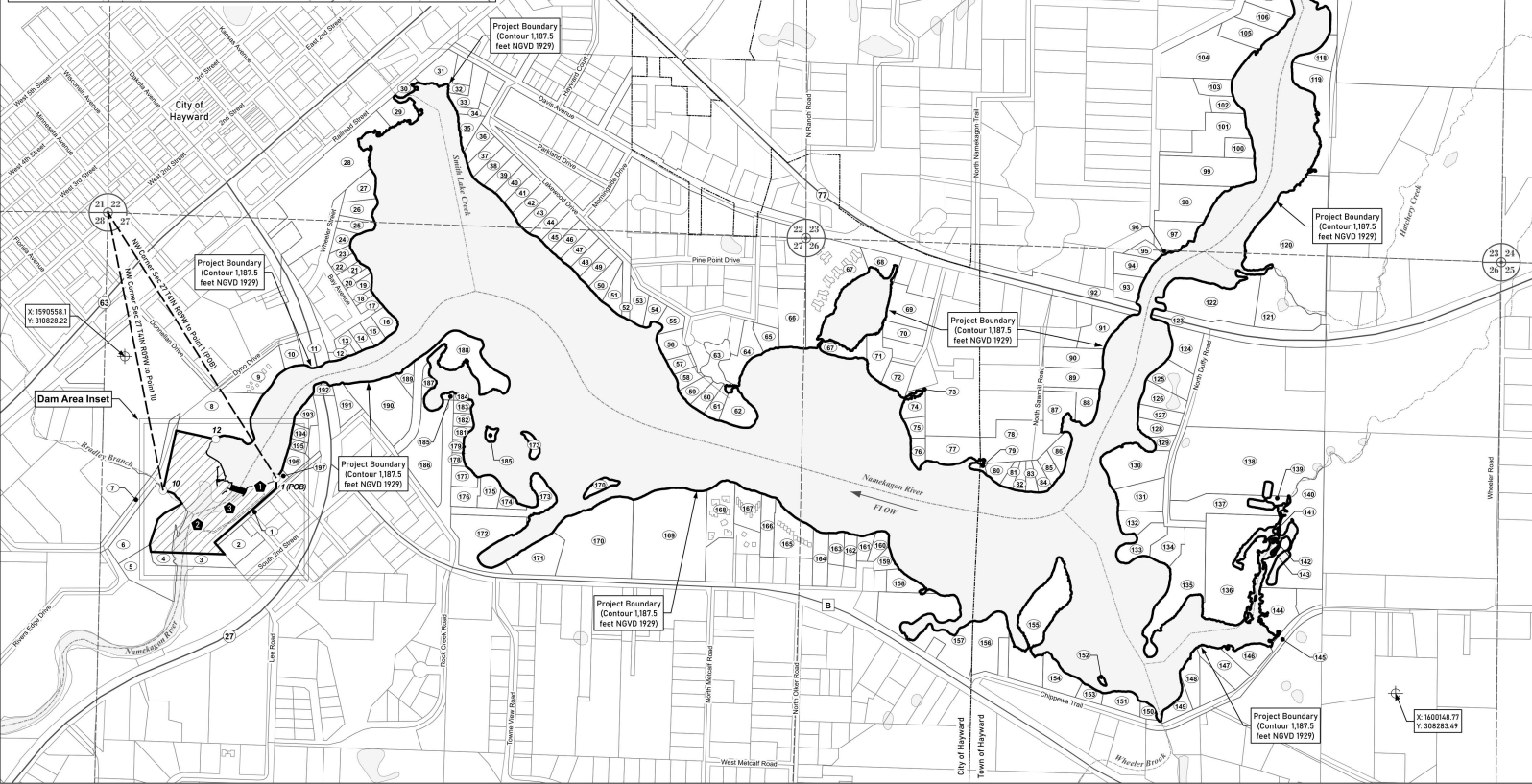
**JASON NESS** DATE: 5-3-2023  
NORTH DAKOTA PROFESSIONAL LAND SURVEYOR  
LS-6884  
DATE 5-3-23

**Map Note:**

Meets and bounds project boundary description is based on GIS information. When the project boundary description references a specific contour, that reference shall govern over bearing and distance references in case of conflict.

Unless specifically noted otherwise, Wisconsin PLSS, parcel boundary, and hydrographic data are from the Wisconsin State Cartographer's Office. Road network data are from the Wisconsin Department of Natural Resources Open Data Portal. Contour lines generated from LIDAR are from GeoData@Wisconsin (2017 for Sawyer County, WI). These items have not been surveyed by Mead & Hunt, Inc.

**ALL PUBLIC ROADS AND ASSOCIATED RIGHT-OF-WAYS ARE EXCLUDED FROM THE PROJECT.**



**LEGEND**

- Project Boundary
- Reference Point Location
- Project Boundary Point
- Recreation Facility
- Traverse Line
- Project Facilities
- Parcel Boundary
- Numbered Parcel \*
- Fee Simple
- Water
- Municipal Boundary
- Section Line
- River
- Major Road
- Local Road

**SCALE IN FEET**

0 200 400 800 1,200 1,600 Feet

Reference coordinates are in Wisconsin Stateplane North Zone FIPS 4801, NAD83.  
Coordinate units are in U. S. Survey feet.  
Project boundary elevation contour is referenced to NGVD 1929.

\* Refer to Exhibit G-2 for Ownership information.

**EXHIBIT G-1**  
NORTHERN STATES POWER COMPANY  
HAYWARD, WISCONSIN

**HAYWARD HYDROELECTRIC PROJECT**  
FERC PROJECT No. 2417  
NAMEKAGON RIVER  
SAWYER COUNTY, WISCONSIN  
**PROJECT BOUNDARY MAP**

**Mead & Hunt**

SCALE: AS SHOWN  
DATE: NOV 2023

**NUMBERED PARCEL LAND OWNERSHIP TABLE**

Parcel No.	Owner	Municipality	Tax Parcel ID	Sawyer County Parcel ID
1	ROW	City of Hayward	38925	236841272003
2	Private	City of Hayward	38172	236110400024
3	Licensee	City of Hayward	38923	236941272001
4	Licensee	City of Hayward	38922	236941272004
5	Private	City of Hayward	38974	236841272314
6	Private	City of Hayward	43353	236841272309
7	ROW	City of Hayward	38925	236941272304
8	Private	City of Hayward	39262	236941272302
9	Private	City of Hayward	CONDO	236750700000
10	Private	City of Hayward	38885	236841272114
11	ROW	City of Hayward	38886	236841272116
12	Private	City of Hayward	38989	236841272120
13	City	City of Hayward	38888	236841272119
14	Private	City of Hayward	37578	236104010100
15	Private	City of Hayward	37579	236104010300
16	Private	City of Hayward	37580	236104010500
17	Private	City of Hayward	37584	236104030100
18	Private	City of Hayward	37585	236104030200
19	Private	City of Hayward	37586	236104030300
20	Private	City of Hayward	37587	236104030500
21	Private	City of Hayward	37588	236104030600
22	Private	City of Hayward	37589	236104030702
23	Private	City of Hayward	37590	236104030900
24	Private	City of Hayward	37591	236104031002
25	Private	City of Hayward	37592	236104031300
26	Private	City of Hayward	37593	236104031300
27	Private	City of Hayward	37594	236104031500
28	Private	City of Hayward	42153	236841223444
29	Private	City of Hayward	38779	236841223432
30	Private	City of Hayward	38705	236841223409
31	Private	City of Hayward	38704	236841223408
32	Private	City of Hayward	38702	236841223405
33	Private	City of Hayward	41649	236841223431
34	Private	City of Hayward	38701	236841223403
35	Private	City of Hayward	38758	236841224308
36	Private	City of Hayward	38069	236159000100
37	Private	City of Hayward	38070	236159000200
38	Private	City of Hayward	38071	236159000300
39	Private	City of Hayward	38072	236159000400
40	Private	City of Hayward	38073	236159000500
41	Private	City of Hayward	38074	236159000600
42	Private	City of Hayward	38075	236159000700
43	Private	City of Hayward	38076	236159000800
44	Private	City of Hayward	38077	236159000900
45	Private	City of Hayward	38078	236159001000
46	Private	City of Hayward	38079	236159001100
47	Private	City of Hayward	38080	236159001200
48	Private	City of Hayward	38081	236159001300
49	Private	City of Hayward	38082	236159001400
50	Private	City of Hayward	38083	236159001500
51	Private	City of Hayward	38084	236159001600
52	ROW	City of Hayward	38759	236841224310
53	Private	City of Hayward	38847	236841271113
54	Private	City of Hayward	38844	236841271109
55	Private	City of Hayward	38855	236841271122
56	Private	City of Hayward	38845	236841271110
57	Private	City of Hayward	38846	236841271114
58	Private	City of Hayward	38843	236841271108
59	Private	City of Hayward	38844	236841271112
60	Private	City of Hayward	38842	236841271107
61	Private	City of Hayward	38849	236841271115
62	Private	City of Hayward	38853	236841271120
63				BOG
64	Private	City of Hayward	38851	236841271117
65	Private	City of Hayward	38846	236841271111
66	Private	City of Hayward	38840	236841271103
67	Private	CONDO	236230000000	
68	Private	City of Hayward	38772	236841262208
69	Private	City of Hayward	38785	236841262222
70	Private	City of Hayward	38786	236841262223
71	Private	City of Hayward	38779	236841262215
72	Private	City of Hayward	38780	236841262216
73				GAP
74	Private	City of Hayward	38782	236841262218
75	Private	City of Hayward	38789	236841262201
76	Private	City of Hayward	38786	236841262212
77	Private	City of Hayward	38790	236841262203
78	Private	Town of Hayward	12832	10941262412
79				BOG
80	Private	Town of Hayward	12831	10941262411
81	Private	Town of Hayward	12830	10941262410
82	Private	Town of Hayward	12829	10941262409
83	Private	Town of Hayward	12833	10941262414
84	Private	Town of Hayward	12828	10941262408
85	Private	Town of Hayward	12827	10941262407
86	Private	Town of Hayward	12834	10941262415
87	Private	Town of Hayward	12826	10941262406
88	Private	Town of Hayward	12825	10941262411
89	Private	Town of Hayward	12820	10941262120
90	Private	Town of Hayward	12806	10941262102
91	Private	Town of Hayward	12816	10941262115
92	ROW	Town of Hayward	12812	10941262109
93	Private	Town of Hayward	12808	10941262105
94	Private	Town of Hayward	12818	10941262116
95	Private	Town of Hayward	12790	10941261204
96	Private	Town of Hayward	12785	10941261213
97	Private	Town of Hayward	43321	10941234323
98	Private	Town of Hayward	43220	10941234322
99	Private	Town of Hayward	12851	10941234303
100	Private	Town of Hayward	41751	10941234317

**PROJECT BOUNDARY COURSE TABLE**

Line ID	From Point	To Point	Distance (feet)	Bearing	Description
<b>To arrive at Point 1 (POB)</b>					
	SEC COR	1 (POB)	2,374.69	S32° 22' 08" E	From NW Corner Section 27, T41N, R09W to a point, Point 1 (POB), on elevation contour 1,187.5 ft NGVD 1929
L1	1 (POB)	2	78.07	S01° 05' 44" W	Along parcel line between Parcel 3 and Parcel 197
L2	2	3	618.59	S48° 37' 44" W	Along parcel line between Parcel 1 and Parcel 3
L3	3	4	116.61	S40° 47' 25" E	Along parcel line between Parcel 1, Parcel 2, and Parcel 3
L4	4	5	557.57	N88° 07' 08" W	Across the Namekagon River through Parcel 3 and Parcel 4
L5	5	6	54.99	N10° 07' 46" W	Along parcel line between Parcel 4 and Parcel 5
L6	6	7	202.43	N18° 04' 04" E	Along parcel line between Parcel 4 and Parcel 6
L7	7	8	63.42	N48° 00' 07" E	Along parcel line between Parcel 4 and Parcel 6
L8	8	9	155.76	N60° 30' 25" E	Along parcel line between Parcel 4 and Parcel 6
L9	9	10	183 ±		Along meandered parcel line between Parcel 3 and Parcel 6 to a point, Point 10, said point bears S11° 13' 18" E, 2,140.89 feet from the NW corner Section 27, T41N, R09W
L10	10	11	464.60	N12° 20' 12" E	Along parcel line between Parcel 3 and Parcel 7
L11	11	12	305.34	S77° 37' 21" E	Along parcel line between Parcel 3 and Parcel 8 to a point, Point 12, on elevation contour 1,187.5 ft NGVD 1929
L12	12	1 (POB)	60,774 ±		Along elevation contour 1,187.5 ft NGVD 1929 to Point 1 (POB)



Magnetic North Declination for 2023 at Hayward Dam

**LICENSEE STATEMENT**  
 I have reviewed the Hayward Hydroelectric Project boundary shown herein. The licensee either owns in fee simple or has the rights necessary or appropriate for the operation of the hydroelectric project. The project boundary line shown on this exhibit was based on GIS parcel information provided by the Wisconsin Statewide Parcel Database and Public Land Survey System (PLSS) information provided by the Wisconsin Department of Natural Resources GIS Open Data Portal and the Wisconsin State Cartographer's Office.

Matthew J. Miller Digitally signed by Matthew J. Miller  
 Date: 2023.06.19 15:12:00 -0500

MATTHEW J. MILLER DATE

**Map Note:**  
 Metes and bounds project boundary description is based on GIS information. When the project boundary description reference a specific corner, that reference shall govern over bearing and distance references in case of conflict.

Unless specifically noted otherwise, Wisconsin PLSS parcel boundary, and hydrographic data are from the Wisconsin State Cartographer's Office. Road network data are from the Wisconsin Department of Natural Resources Open Data Portal. Contour lines generated from LIDAR are from GeoData(Wisconsin (2017 for Sawyer County, WI). These items have not been surveyed by Mead & Hunt, Inc.

ALL PUBLIC ROADS AND ASSOCIATED RIGHT-OF-WAYS ARE EXCLUDED FROM THE PROJECT

**SURVEYOR'S STATEMENT**  
 I HEREBY STATE THE PROJECT BOUNDARY DELINEATION FOR THE HAYWARD HYDROELECTRIC PROJECT AS SHOWN ON THIS EXHIBIT "G" MAP IS DEVELOPED WITHIN REASONABLE MAPPING ACCURACIES AS REQUIRED IN 16CFR4.1. THE DOCUMENTED HAYWARD PROJECT BOUNDARY LINE WAS ADJUSTED OR ROTATED TO BEST FIT WITH GEOSPATIAL DATA OBTAINED FROM WISCONSIN ONLINE DATA SOURCES AND WAS NOT FIELD SURVEYED.

6-3-2023  
 JASON NESS DATE

Reference coordinates are in Wisconsin Stateplane North Zone FIPS 4801, NAD83.  
 Coordinate units are in U. S. Survey feet.  
 Project boundary elevation contour is referenced to NGVD 1929.

**RECREATION SITE TABLE**

Note: The Licensee owns and maintains the portage trail on the east side of the Project dam between Site ID 1 and Site ID 2. The portage trail includes signs and is approximately 650 feet long. There is a small stairway at Site ID 1 that leads from the reservoir up the bank of the shoreline. The portage trail then runs adjacent to South First Street to a short pathway leading to the Namekagon River downstream of the spillway.

Site ID	Recreation Facility	Latitude	Longitude
1	Canoe Portage Take-Out and Carry-In Access	46° 00' 24.264" N	91° 29' 00.353" W
2	Canoe Portage Put-In	46° 00' 21.355" N	91° 29' 07.005" W
3	Informal Tailwater Bank Fishing Area	46° 00' 22.623" N	91° 29' 03.584" W

EXHIBIT G-2

NORTHERN STATES POWER COMPANY HAYWARD, WISCONSIN

**HAYWARD HYDROELECTRIC PROJECT  
 FERC PROJECT NO. 2417  
 NAMEKAGON RIVER,  
 SAWYER COUNTY, WISCONSIN**

**PROJECT BOUNDARY MAP**

Mead & Hunt

SCALE: AS SHOWN  
 DATE: 06/19/2023

P-2417-XXX